

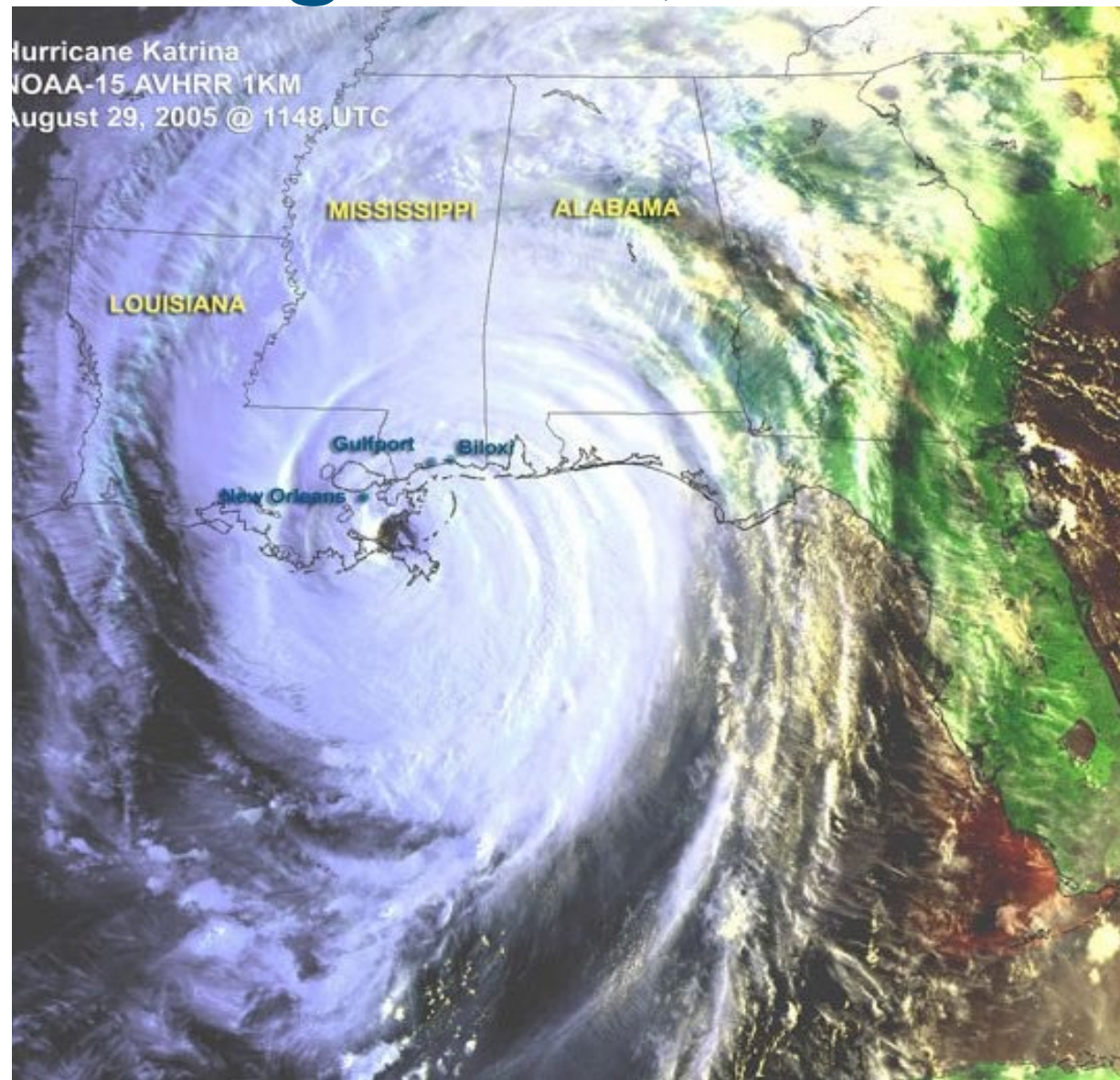


# Waste Storing, Disposal, and Logistics following Hurricane Katrina

August 29, 2005



# August 29, 2005



# Assess the Damage





Clemson

075

AV  
ALUMNI ASSOCIATION  
228-392-5108

CAUTION  
DO NOT  
ENTER  
UNLESS  
YOU  
ARE  
A  
PROFESSOR

EMERGENCY  
MEDICAL  
SERVICES



PRINT PLAY

PIT 3  
CR-5

2004/01/03



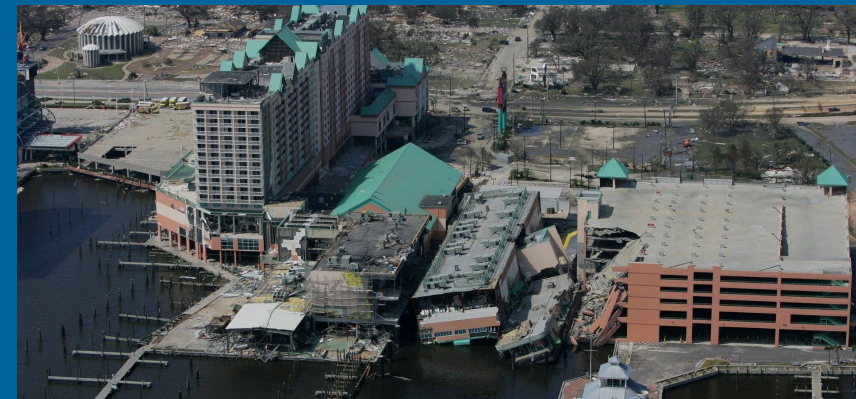
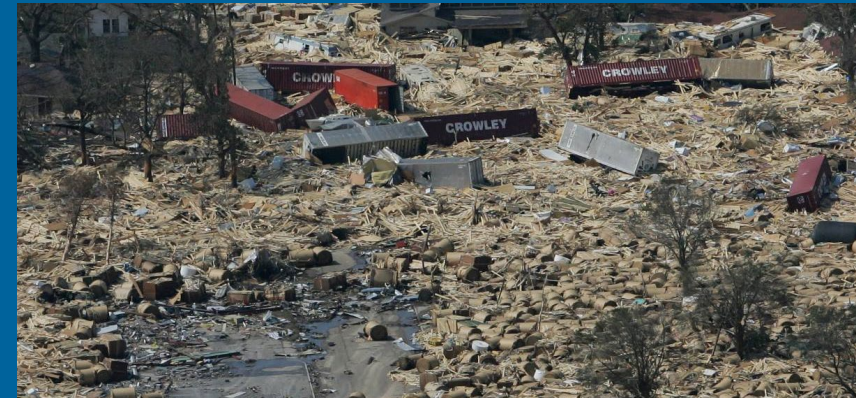
2004/01/01



"LUNA SEA"  
BILOXI, MS

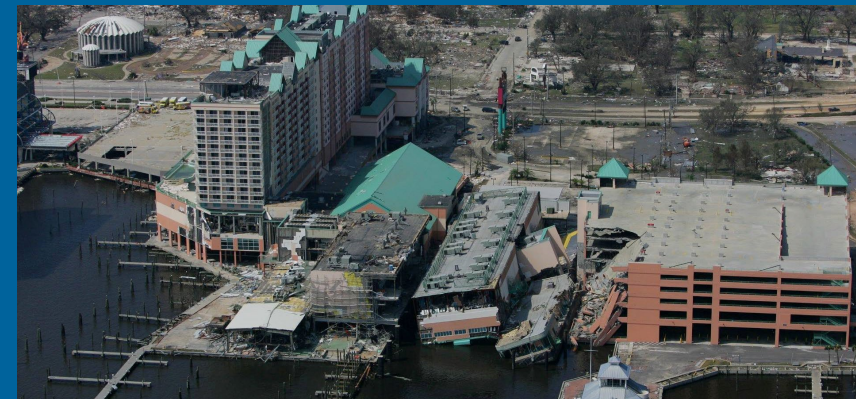
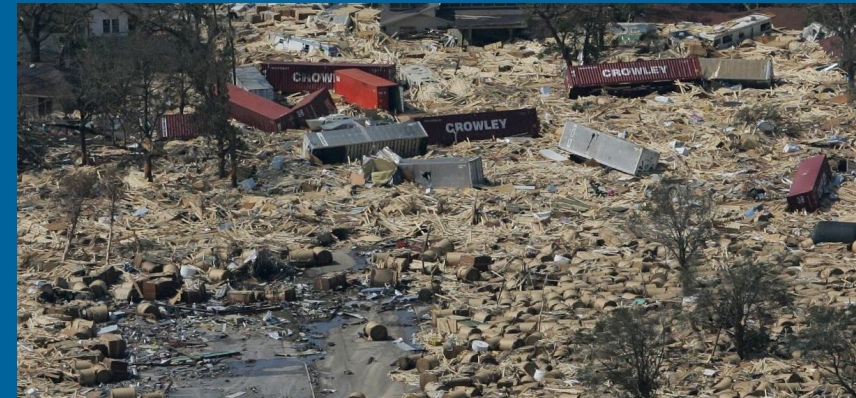
# What's the Plan?

- ▶ Yates had three priorities after Katrina hit:
  - ▶ Take care of our people
  - ▶ Take care of our clients
  - ▶ Take care of the communities in which our people reside.
- ▶ Yates adopted the motto: “Standing Tall Through It All.”
- ▶ The Plan must focus on safety first, assessment next, and then recovery.



# Where do you start?

- ▶ A large-scale operation was set up to support Yates' multiple sites and crews.
  - ▶ Temporary trailers to house over 300 employees
  - ▶ Provide food and water
  - ▶ Setting up portable toilets and showers
  - ▶ We worked with our subcontractors and set up a disposal operation for liquid waste.
  - ▶ Ice, water and fuel were brought in and stored for use in day-to-day operations
  - ▶ mechanics, tire crews and maintenance personnel
  - ▶ Yates fuel supply trucks were brought in to keep the power generation fueled
- ▶ Fully operational 2 days after the storm



# Phase One: Clearing the Main Roads



# Debris Removal Challenges

- The Hurricane Katrina cleanup represents the biggest waste-disposal job in U.S. History, dwarfing in volume the debris carted off after the World Trade Center's twin towers fell in 2001!



# Phase Two: Clearing Right of Way



# Statistics

- More than 2.08 million cubic yards – amount of storm debris that had been removed from city streets and public rights-of-way since the storm. This amount of debris would cover a football field with and stand more than 97 stories high. City leaders estimate that about 75 percent of the debris had been removed six months after the storm.

Breakdown on the debris hauled at six-month point:

Burnable	422,696 CY
Unburnable	1,625,112 CY
Appliance	30,006 CY
Electronics	380 CY
Total	2,078,194 CY



# Statistics

Hurricane Katrina created disaster debris across a 90,000 square-mile disaster area.

- 3.4 million CY in Alabama
- 45.8 million CY in Mississippi
- 64.3 million CY in Louisiana

In the end, the Yates team had removed approximately 1,900 structures either standing, partially standing or piled debris and removed over 3 million cubic yards of debris.

All sorting of waste material was done manually by Yates personnel.

There was no playbook for how to remove a casino barge from a major highway





Thank You

