



August 28, 2025

Air & Waste Management Association: Navigating

Tianna H. Raby
Vice President of Regulatory
Entergy Mississippi





Overview

We Power Life at Entergy Mississippi.

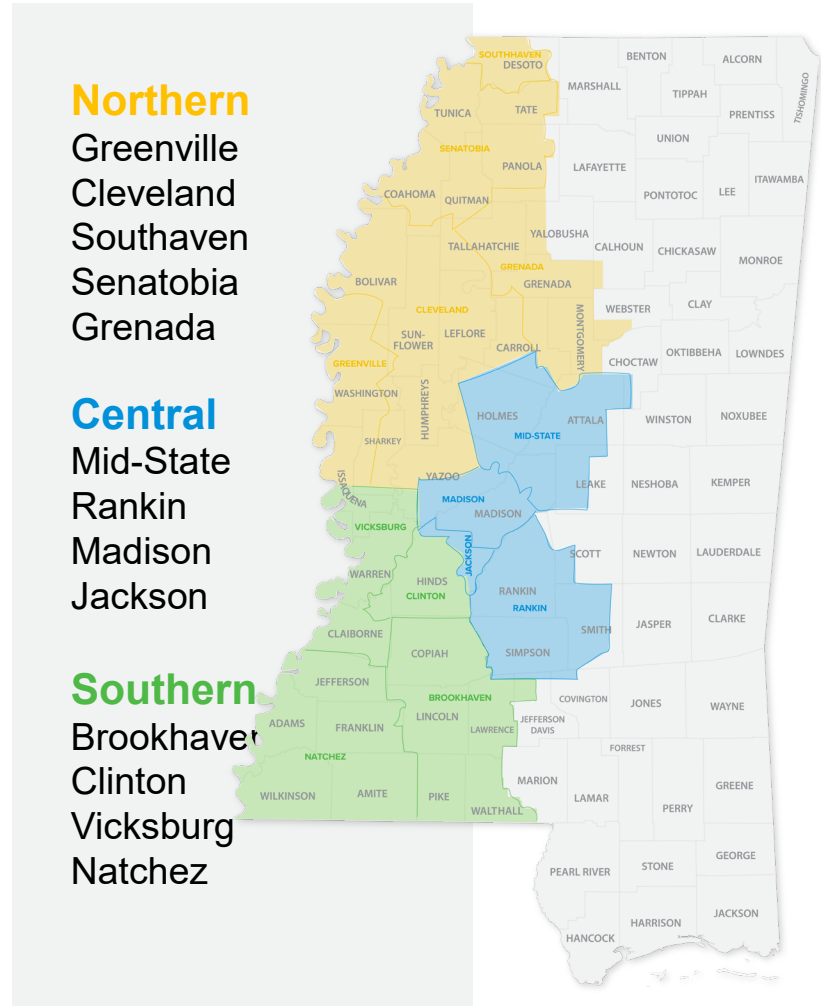
For more than 100 years, EML has provided safe, affordable electricity to residential, commercial, and industrial customers in 45 counties of Mississippi. We're investing in the reliability and resilience of the energy system while helping our region transition to cleaner, more efficient energy solutions.

Entergy Mississippi is poised to secure an unrivaled growth opportunity fundamentally transforming the business and the region. We anticipate the opportunity will deliver positive outcomes for all stakeholders: customers, communities, employees and owners, continuing the transformation towards becoming the Premier Utility.

Operations: Entergy Mississippi power grid facts

Entergy Mississippi customers: 459,000

- Service territory: 23,400 square miles in 45 counties
- Substation feeder breakers: 810
- Distribution poles: 511,080
- Primary line miles: 19,007 miles
 - Round trip from Jackson, Mississippi to Melbourne, Australia covers about the same distance as all our primary line miles.
- Transmission line miles: ~3,041 miles
- Power generation: 3.5GW capacity
 - 9 natural gas units at 4 plants
 - 4 solar sites, including original pilots
 - 1 nuclear plant



Northern

Greenville
Cleveland
Southaven
Senatobia
Grenada

Central

Mid-State
Rankin
Madison
Jackson

Southern

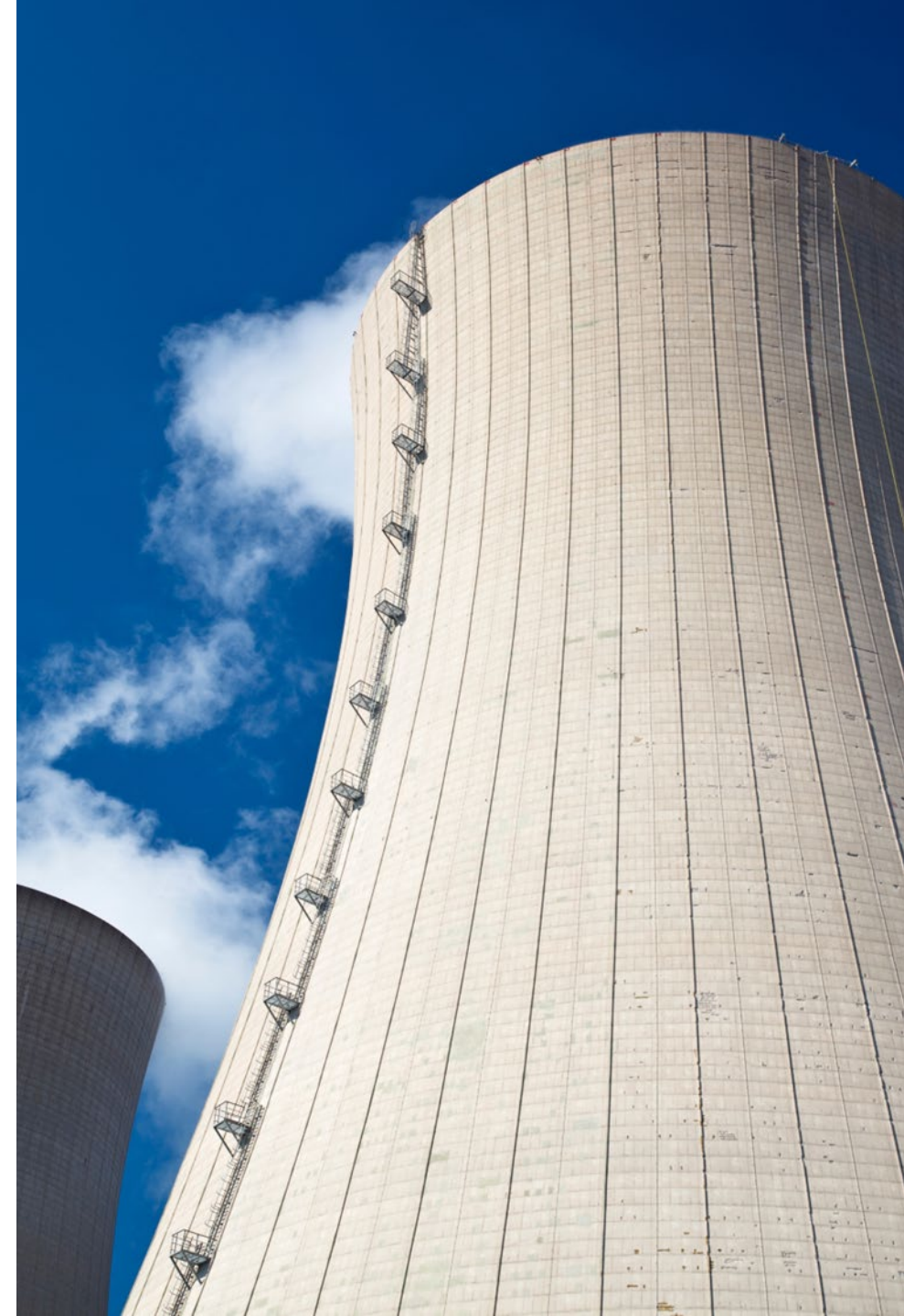
Brookhaven
Clinton
Vicksburg
Natchez

Challenges

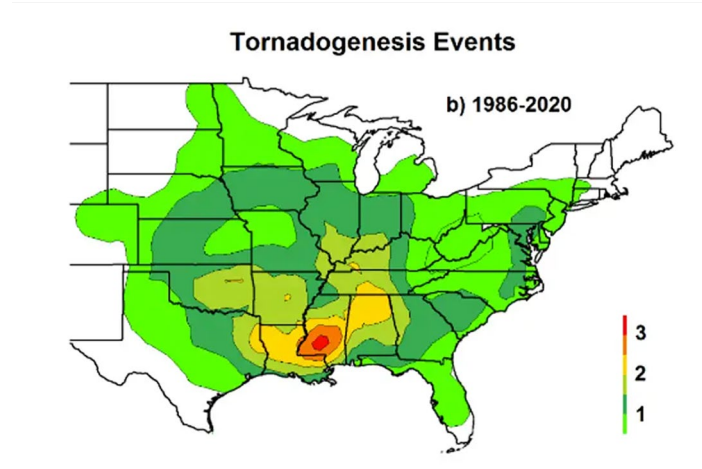
- Increase in weather and climate risks
- Aging infrastructure
- Rising costs of materials used in our business
- Stagnant customer base and affordability
- New & evolving regulations and standards
- Customer expectations and electrification

The Opportunity

Transformational growth to help modernize the grid, strengthen reliability, and serve customers better.



Weather impacts

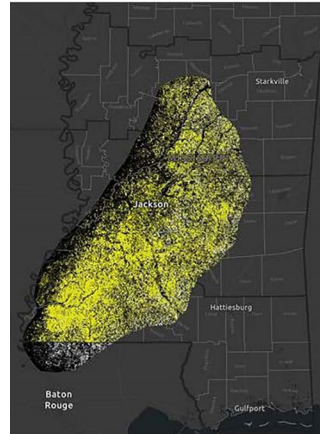


American Meteorological Society

Tornado Alley

The Weather Channel recently reported that a study published by the American Meteorological Society found that tornado alley has shifted.

Recent thunderstorms have had tornado-like winds.



Mississippi Forestry Commission

Pine Spots (Areas)	Number of Spots	Total Acreage
Public BOE	31,042	3,168.33
Federal/Tribal	125,154	12,331
Private/Other Public	654,915	64,916
Total	811,111	80,415.33

Drought impacts

Mississippi has 12.5M+ dead trees due to the 2023 drought, a report by the Mississippi Forestry Commission found.

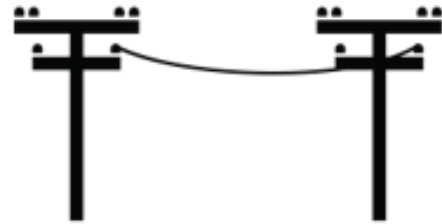


California wildfires/Getty Images

Vegetation risks

Comparing the first three months of 2025 to the same period in the previous three years, outages caused by fallen trees are up by 80%. Many of these trees are outside our right of way. These factors also pose wildfire risks.

Storm restoration 2023-2025: **By the numbers**



Miles of lines repaired

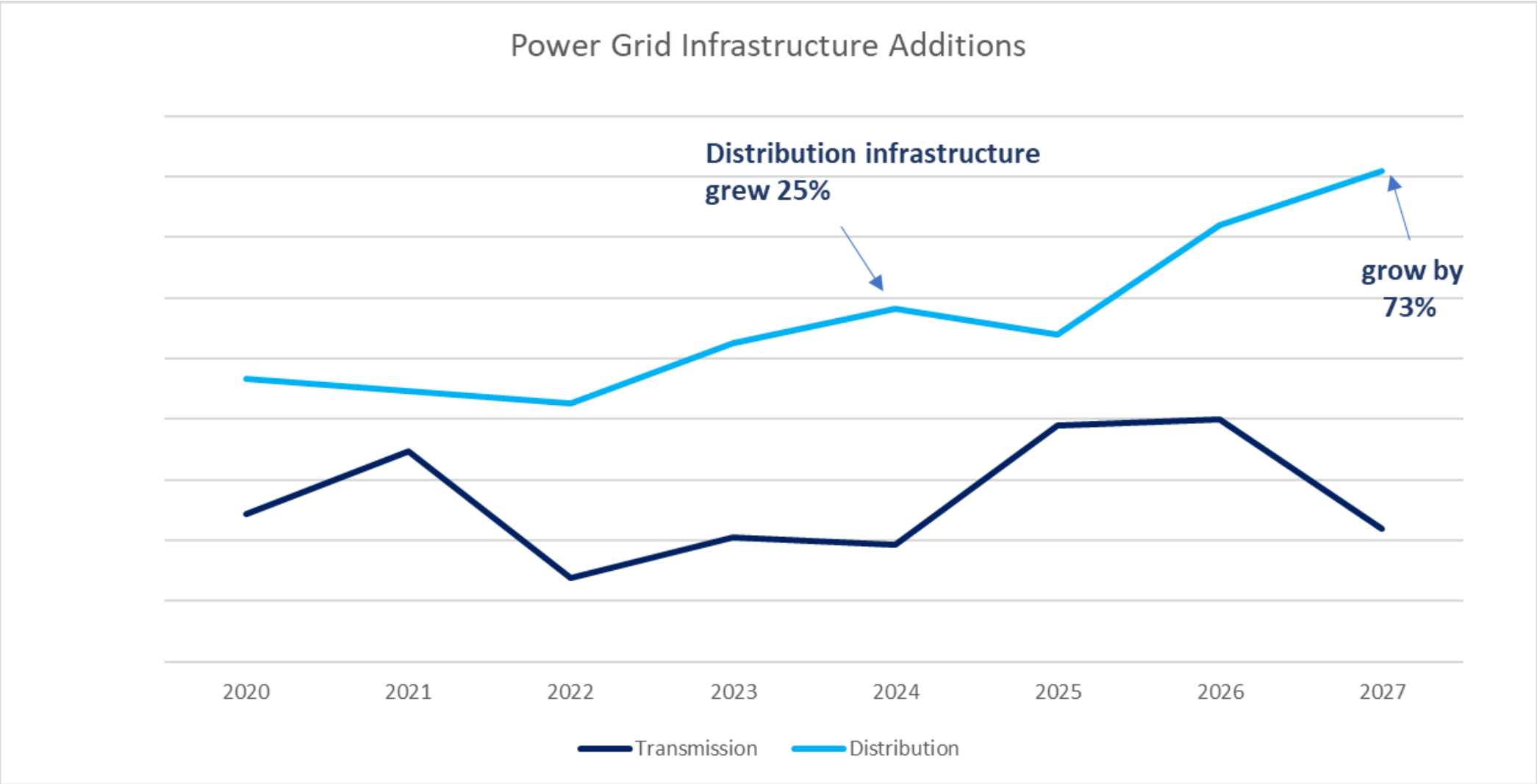
Transformers replaced

Poles and cross-arms replaced

2023	210	765	2,609
2024	192	285	1,439
2025	141	243	1,300
Total	543	1,293	5,348

2025 totals reflect figures through end of May.

Grid improvements are happening



Resource planning



Delta Blues

754 MW

\$1.2 billion

300 construction jobs

Safe, clean, efficient



Solar

Sunflower solar (less than 1% of total power generation)

AWS supporting 650 MWs of new solar



Nuclear

40 years of safe operation at Grand Gulf

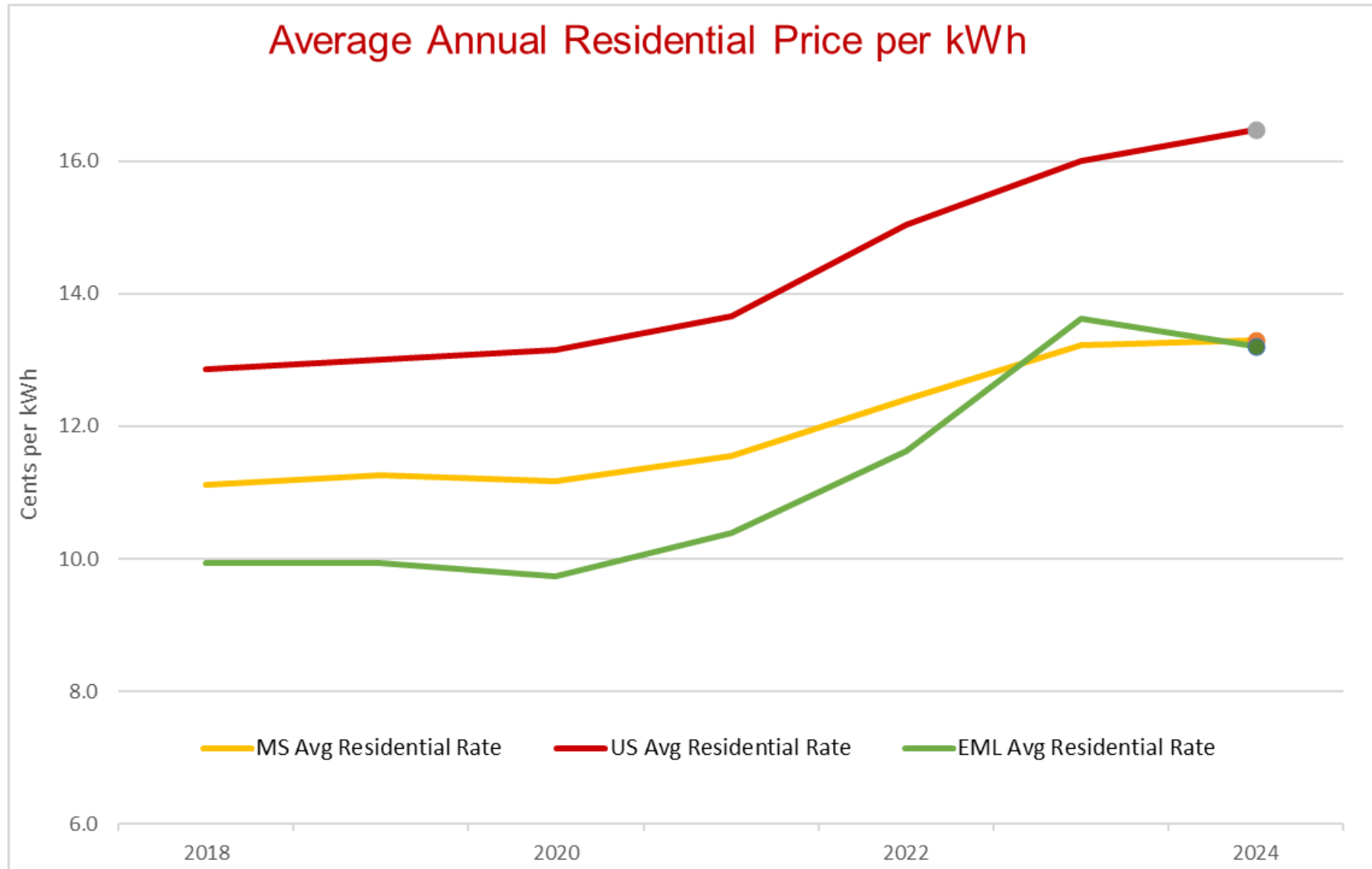
License extended through 2044

Rising costs of materials

- Supply chain vulnerabilities
- Vetting new suppliers to ensure compliance with government regulations
- Budget and staffing adjustments



EML rate comparison



Evolving regulatory landscape

- Long-term planning, capital investment decisions, and customer solutions must adapt as policies change.
 - Continuous monitoring of legislative and regulatory developments.
 - Scenario planning to evaluate potential impacts.
 - Engagement with regulators and policymakers to ensure balanced outcomes.
- The Goal – Stay flexible and proactive to align with new requirements while protecting affordability and reliability.



Success driven by

Entergy

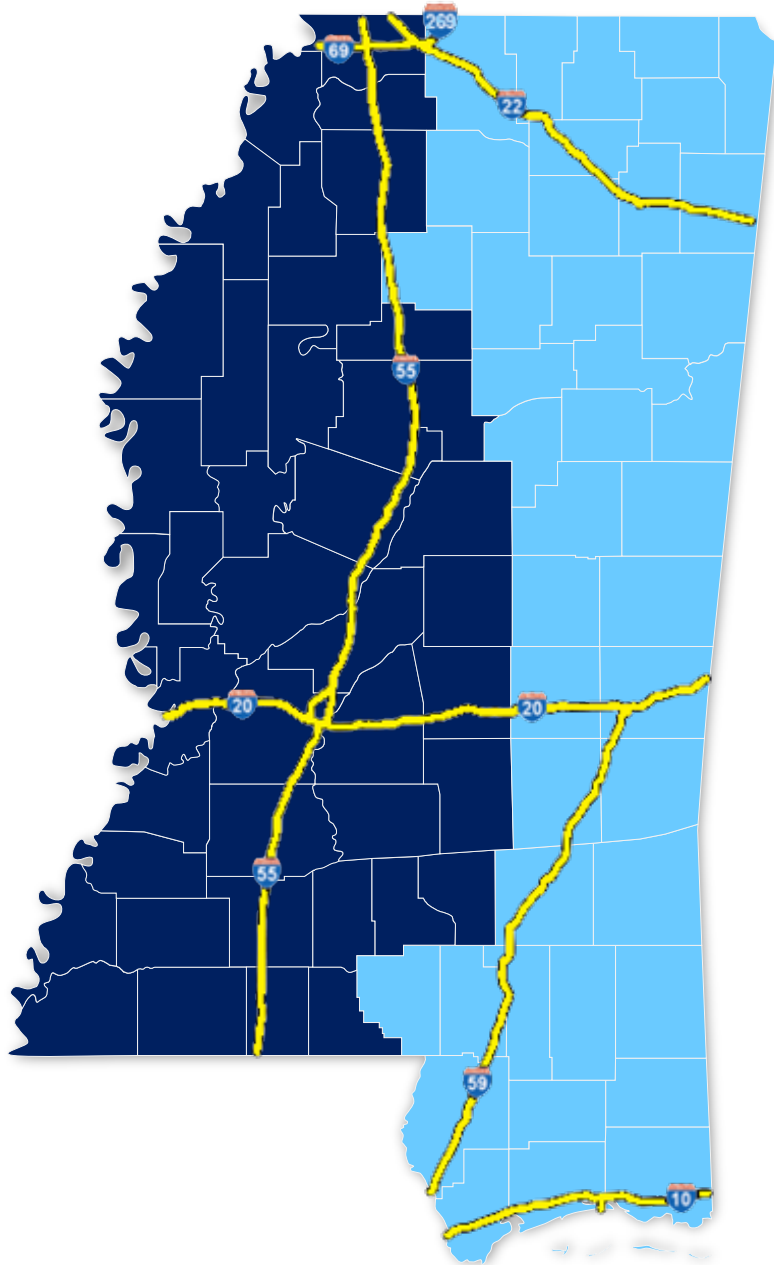
- Service capacity
- Rates
- Reliability
- Clean energy

State competitiveness

- Public policy and programs
- Financial incentives

Local competitiveness

- Marketable assets (sites and buildings)
- Workforce
- Investments



Our role in economic development

- Work with state and local economic development agencies to recruit new industry and improve community competitiveness.
 - New business attraction
 - Expansion and retention of existing business
 - Community competitiveness
- Entergy Mississippi's future success is dependent on thriving communities.

Navigating uncertainties through growth

Amazon Web Services

Transformative for Mississippi

- \$10B capex announced
- 1,000+ direct jobs
- \$80K+ salary per job
- Estimated 2,700 additional indirect and induced jobs created
- Substantial tax revenue in the millions
- Positions Mississippi as the newest technology leader in the Southeast



Transformative for Entergy Mississippi

- AWS will be one of the largest customers in the Entergy system
- Diversification of industry
- First hyperscale data center in Entergy footprint
- Customer has 100% renewable goals and partnership aspirations





How to calculate a rate

$$\frac{\text{Cost of electricity (A)}}{\text{KWh consumed/sales (B)}} = \text{Price/rates (C)}$$